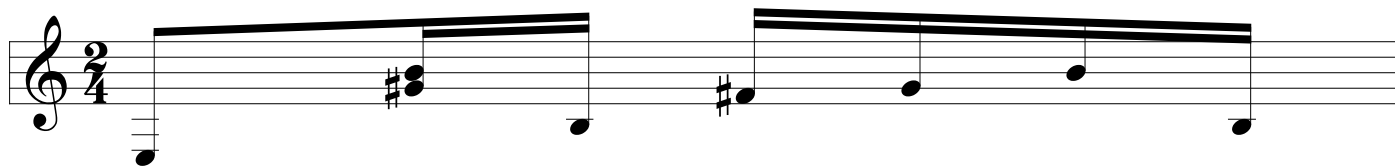


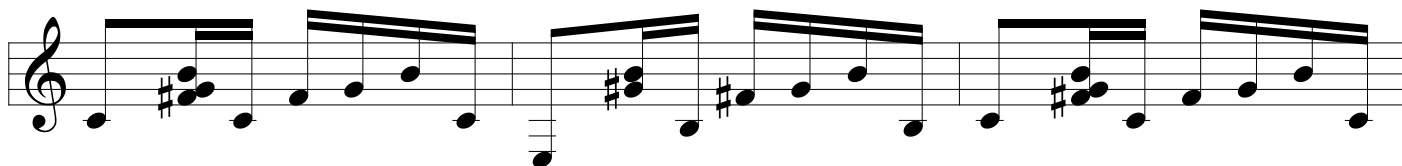
E7M/9



C7M/#4

E7M/9

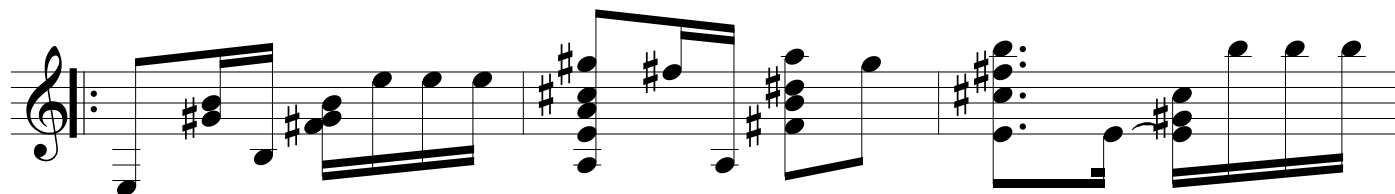
C7M/#4



E7M/9

B13(b9)/A

E6/9

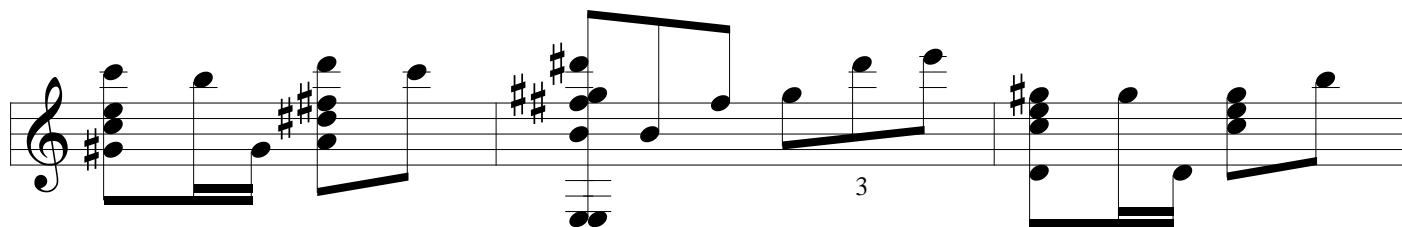


Am9(7M)

B7(#9)

E7M/9

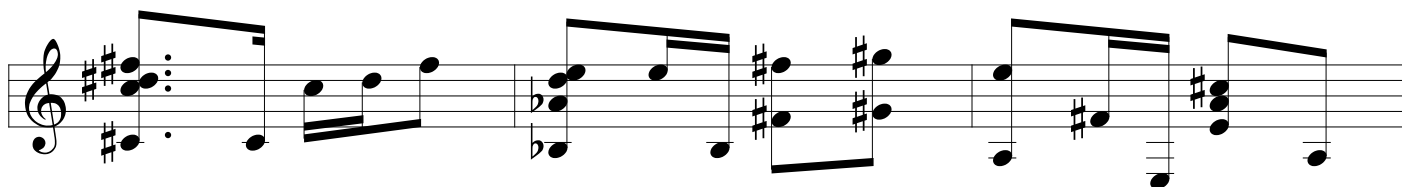
D7(#11)



C#m(7M)

Ab7(#11)

A7M

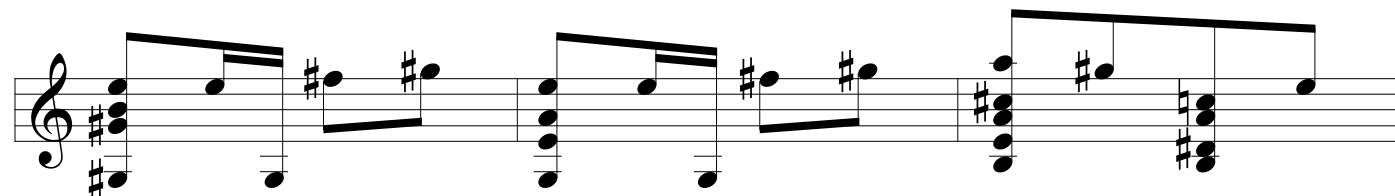


E/G#

Em6/G

B4/7/9

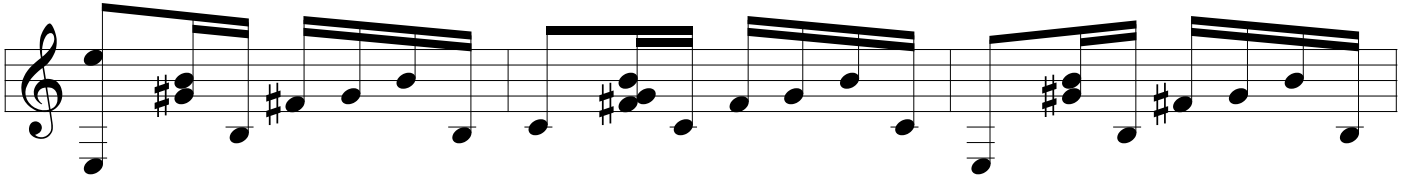
B7(b9)



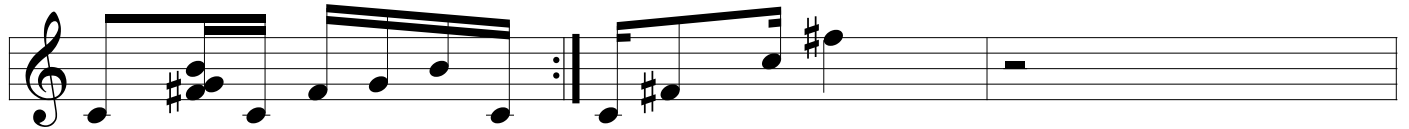
E7M/9

C7M(#11)

E7M/9



C7M(#11)

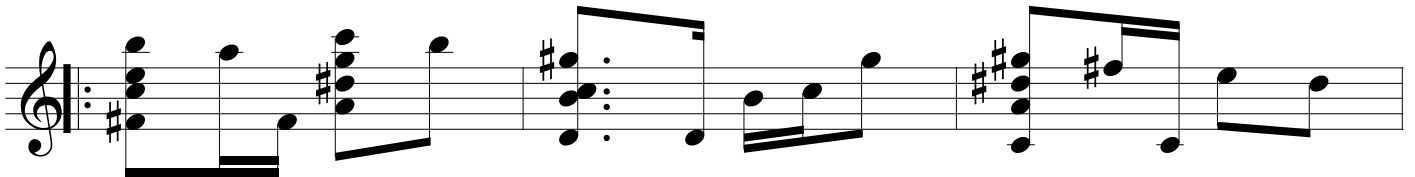


F#m7(b5)

Am7(b5)

E/D

Cm6/b13

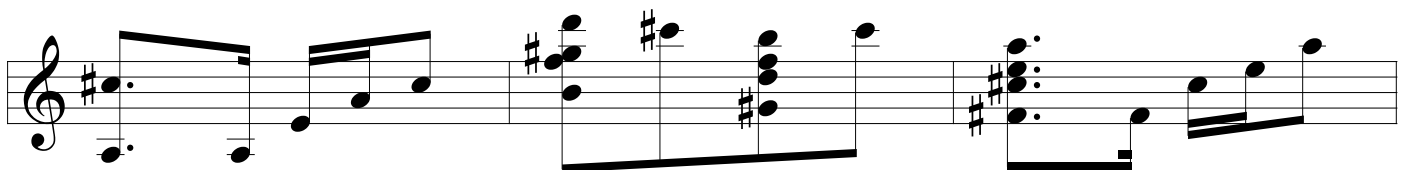


A9

B°

G#°

F#m7

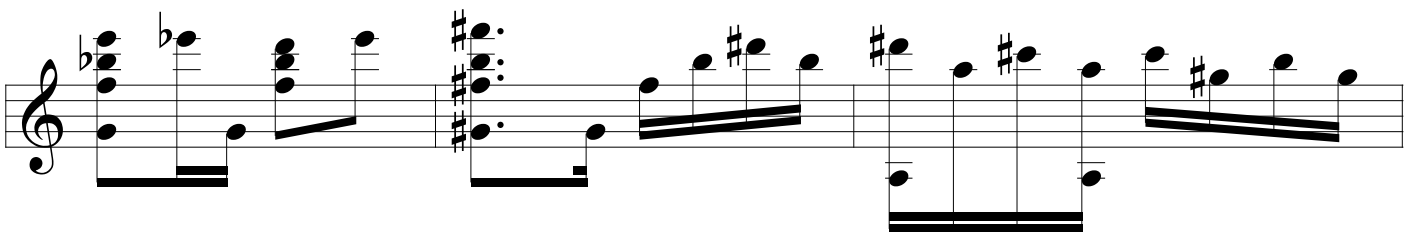


Gm13

Gmb13

G#m7

A#4



E/G#

B/D#

B13/C#

B



E7M/9

