

Flor Morena compositor: Marcos Assunção

A7M

G#m(11)

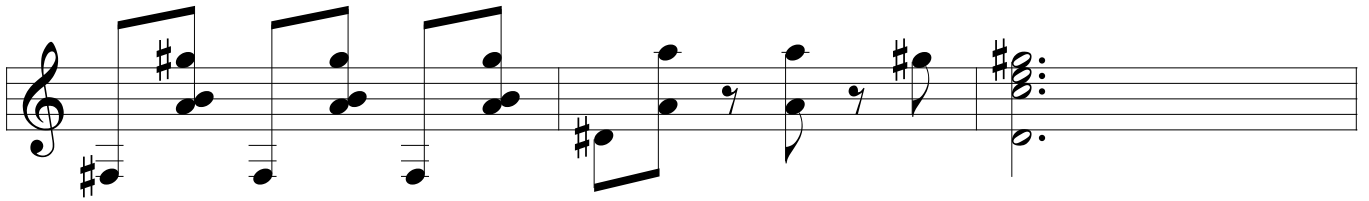
Gm6/b13



F#m(11)/9

D#m7(b5)

D7/9/#11



G#m7(b5)

C#7/b13



F#m

F#m(7M)/F

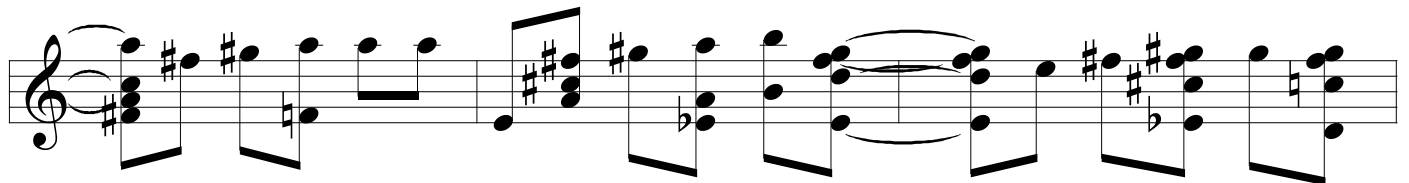
F#m7/E

F#m6/D#

E7M/9

D#m7(11)

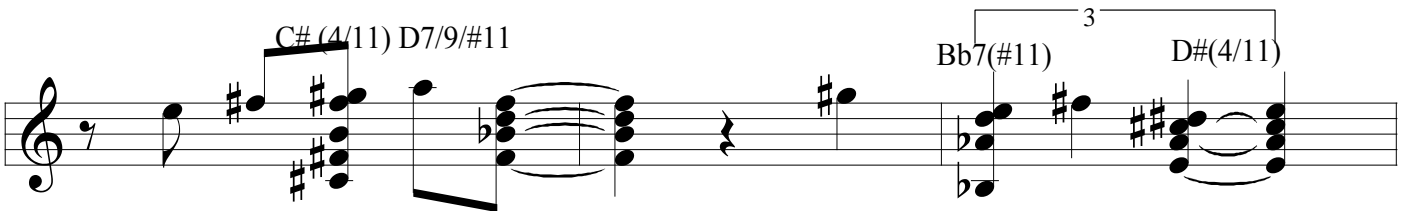
D7(#11)



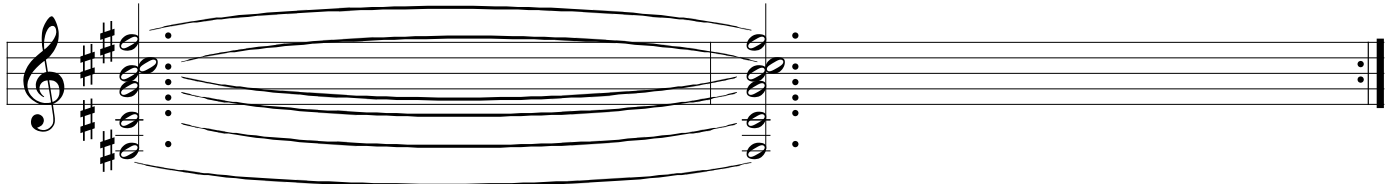
C#(4/11) D7/9/#11

Bb7(#11)

D#(4/11)



F#b2/11



B7M/9 B7M/9/13

B6/9

C#7/B

Bbmb2/7 Ebm7/Bb

Bbm7

Ebm/Bb

G#m(11)

G#°

B7M/F#

E(#4)7/9

Eb7M

Ab7M

Gm7

C#7/13

Dm7(b5)

G7 alt.

Cb9/11/5

D7/#11

IMPROVISO

A7M E7M/G#

C7/#9/G F#m7

D#m7/b5 D7/#11

% G#m7(b5)

C#7/b9 F#m F#m(7M)

F#m7 F#m6 E7M/6

This block contains three chords written in treble clef. The first chord is F#m7, consisting of notes F#, G, A, B, C, and D. The second chord is F#m6, consisting of notes F#, G, A, B, C, and E. The third chord is E7M/6, consisting of notes E, F#, G, A, B, and C.

D7(#11) C7(#11)

This block contains two chords written in treble clef. The first chord is D7(#11), consisting of notes D, E, F, G, A, B, and C#. The second chord is C7(#11), consisting of notes C, D, E, F, G, A, and B#.

Bb7(#11)

This block contains one chord written in treble clef: Bb7(#11), consisting of notes Bb, C, D, Eb, F, G, and Ab. The notation ends with a double bar line and a repeat sign, followed by the text "D.C. al F".